



**Chestnut Street Business District
Downtown Philadelphia
Between 16th & 17th Streets**

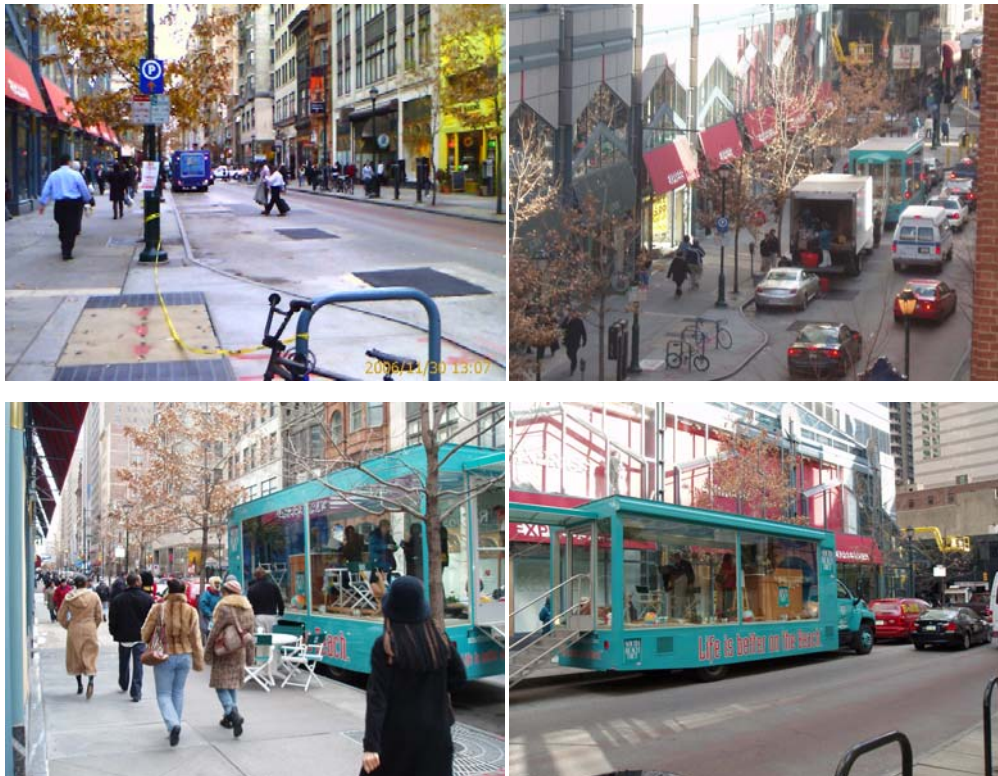
According to the Center City District, Chestnut Street is the highest pedestrian traffic corner in downtown Philadelphia during the work week. It is also at the main entrance into Liberty Place, Philadelphia's premiere downtown mall, featuring the Body Shop, Douglas Cosmetics, Bandolino, Ann Taylor Loft, Victoria's Secret, Benetton, Casual Corner, Express, J. Crew, Jos. A Bank, Aveda, Nine West, Border's Express and GNC and popular food court with over 16 offerings from Bain's Deli, Café Spice, Chick-fil-A, Flamers, Master Wok, Original Turkey, Salad Works, Subway and Smoothie Junction.

Pricing Range: Meters only at \$500 for mobile units. For mobile units with tents, tables, outdoor space is available at Liberty Place's main entrance. Liberty Place begins at \$1,850 per day depending on setup size and logistics.

Attendance: Varies during warm weather months easily 30,000-45,000 per day.

Hours of Operation: 9:00am-6:00pm

Demographics: Professionals, City Workers, Shoppers, Tourists



**Contact:
Sharon Tice
Sponsor Philly Events
215-763-1200
sharontice@sponsorphillyevents.com**